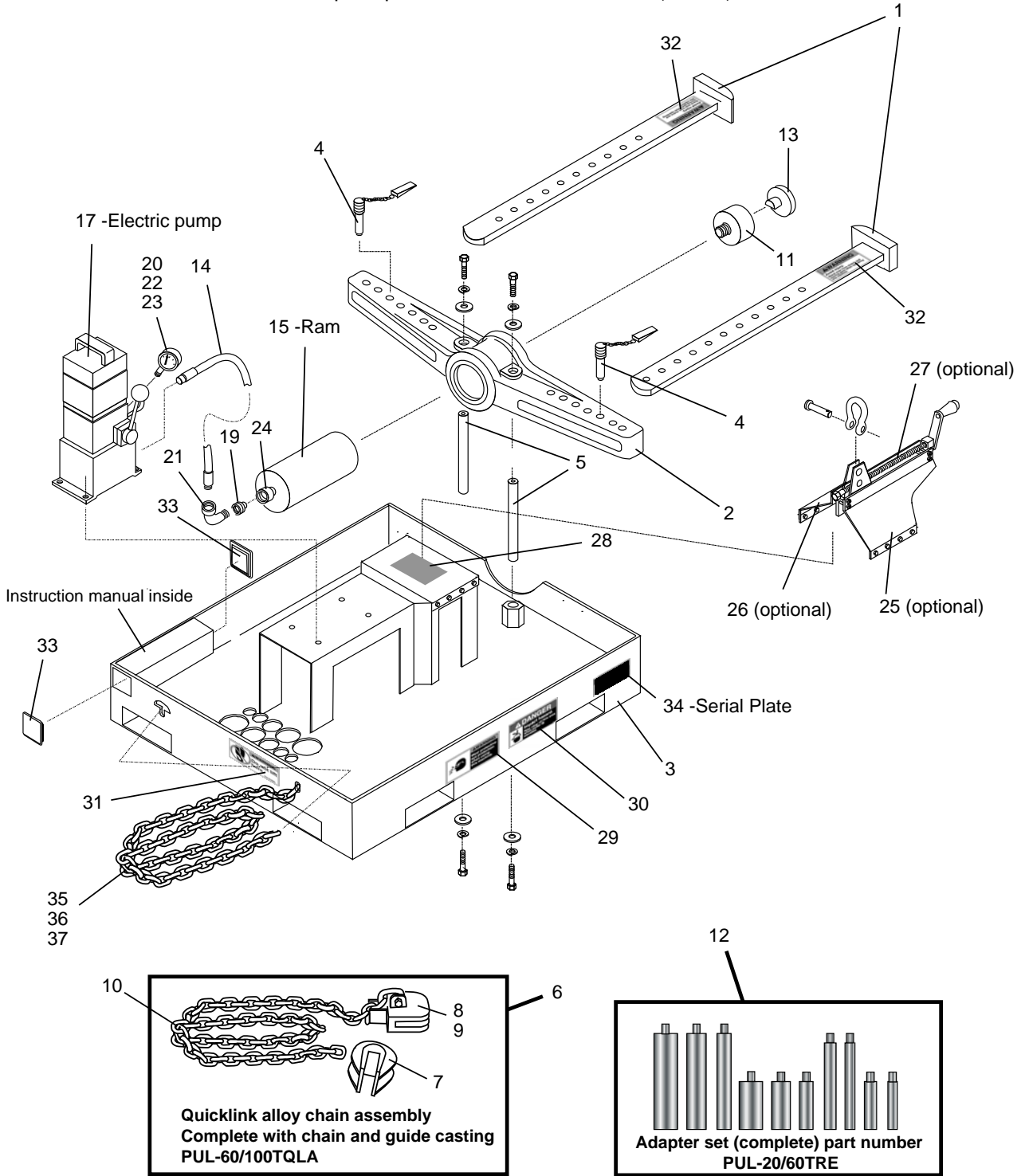


# INDUSTRIAL PULLEY PULLER

2670 Newport Road NE, Iowa City, IA 52240, 888-443-2288, Fax: 888-443-5088

## 60-ton "Low-Profile" Industrial Pulley Puller Parts

Complete part number PUL-60 TON-LPE (Electric)



# INDUSTRIAL PULLEY PULLER

2670 Newport Road NE, Iowa City, IA 52240, 888-443-2288, Fax: 888-443-5088

## 60-ton "Low-Profile" Industrial Pulley Puller Parts

Complete part number PUL-60 TON-LPE (Electric)

| Ref. No. | Part Number                  | Description   | Quantity |
|----------|------------------------------|---|----------|
|          | PUL-60 TON-LPE<br>(COMPLETE) | 60-TON LOW-PROFILE PULLER COMPLETE WITH ELECTRIC PUMP, 2 QUICKLINK CHAIN ASSEMBLIES AND SET OF RAM ADAPTERS |          |
| 1        | PUL-60TA                     | 60-TON PULLER ARM ASSEMBLY (single arm)   | 2        |
| 2        | PUL-60TB                     | 60-TON PULLER BEAM  | 1        |
| 3        | PUL-LP-BASE                  | PLATFORM BASE   | 1        |
| 4        | PUL-60TP-1                   | BEAM PIN ASSEMBLY; 60-TON   | 2        |
| 5        | PUL-60TU-1LP                 | UPRIGHT SUPPORT ROD   | 2        |
| 6        | PUL-60/100TQLA               | QUICKLINK CHAIN ASSEMBLY (WITH CHAIN ANDGUIDE CASTING)  | 1        |
| 7        | PUL-60/100TQ-1               | GUIDE CASTING (ONLY); 60/100 TON  | 1        |
| 8        | PUL-60/100TQ-2A              | CHAIN CASTING (ONLY); 60/100 TON  | 1        |
| 9        | PUL-60/100TQ-BT              | 5/8"-11 X 5" SET SCREW  | 4        |
| 10       | PUL-60/100TQLC               | CHAIN (ONLY)  | 1        |
| 11       | PUL-60/100TRC                | 60 TON RAM ADAPTER ASSEMBLY   | 1        |
| 12       | PUL-20/60TRE                 | 60 TON RAM ADAPTER SET(Includes 10 adapters)  | 1        |
| 13       | PUL-100TRP                   | RAM PLUG; 60 TON  | 1        |
| 14       | PUL-HH-33                    | HYDRAULIC HOSE  | 1        |
| 15       | PUL-60TR-3                   | RAM; 60 TON (CSR6011-IES)   | 1        |
| 16       | *** PUL-60TR-KIT-2           | REPAIR KIT; #X80812 (For Ram)   |          |
| 17       | PUL-20TR-IEL                 | ELECTRIC PUMP 3-WAY (HUP-180-3RC)   | 1        |
| 18       | *** PUL-20TR-KIT-2           | REPAIR KIT; #X308-SK (For Pump)   |          |
| 19       | PUL-20TR-5                   | COUPLER-HOSE HALF; HA-17  | 1        |
| 20       | PUL-100TR-6                  | 10,000 PSI PRESSURE GAUGE (HA-90) ELECTRIC  | 1        |
| 21       | PUL-100TR-ELBOW              | 3/8"-3000#; STREET ELBOW  | 1        |
| 22       | *** PUL-HA-119               | STREET ELBOW (NOT SHOWN) (On Gauge)   | 1        |
| 23       | *** PUL-HA-120               | PIPE REDUCER (NOT SHOWN) (On Gauge)   | 1        |
| 24       | PUL-20TR-4                   | RAM COUPLER (HA-18)   | 2        |
| 25       | Call                         | BRACKET LEVELER -RIGHT SIDE (NEAR SIDE) Optional  | 1        |
| 26       | Call                         | BRACKET LEVELER-LEFT SIDE (FAR SIDE) Optional   | 1        |
| 27       | Call                         | SEE LEVELER PARTS (optional)  |          |
| 28       | 35-0030                      | DECAL, READ MANUAL  | 2        |
| 29       | 35-0032                      | DECAL, WEAR EYE PROTECTION  | 2        |
| 30       | 35-0036                      | DECAL, IMPACT HAZARD  | 2        |
| 31       | 35-0040                      | DECAL, DO NOT LIFT HERE   | 2        |
| 32       | 35-0034                      | DECAL, STAND CLEAR  | 4        |
| 33       | PUL-LP-B18                   | PLUG, RUBBER  | 2        |
| 34       | PUL-TAG                      | SERIAL PLATE  | 1        |
| 35       | PUL-8TQLC                    | CHAIN, SUPPORT  | 2        |
| 36       | 67-1200                      | HHCS, 1/2"-13 X 1-1/4"  | 2        |
| 37       | 69-0460                      | Locknut, 1/2"-13  | 2        |

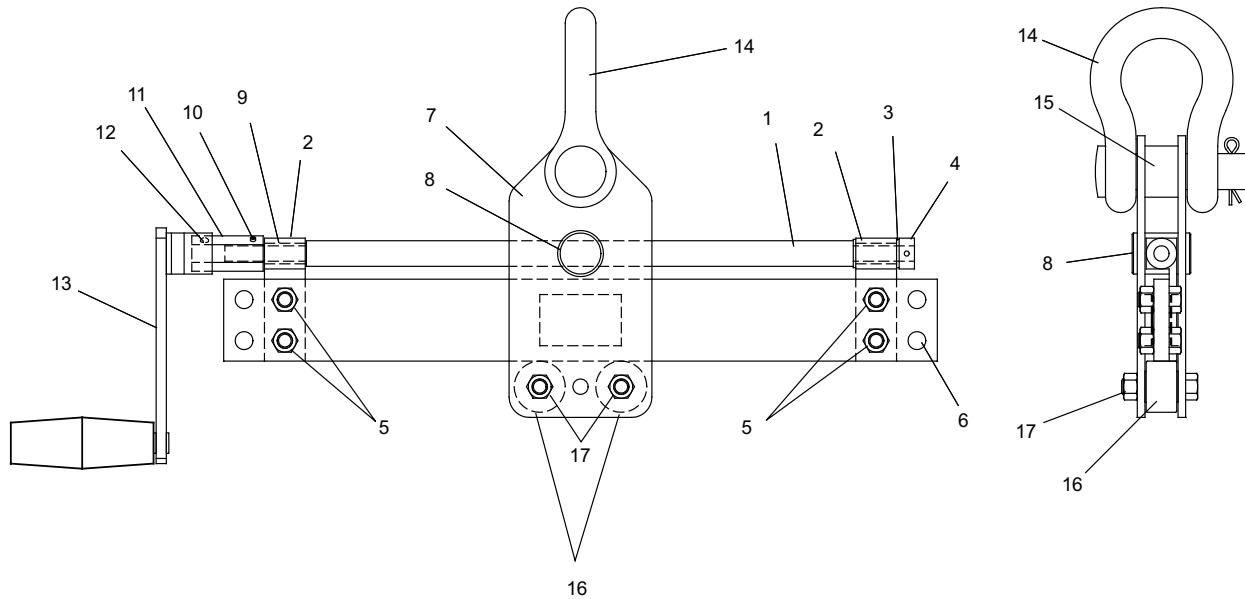
\*\*\* NOT SHOWN ON DRAWING

# INDUSTRIAL PULLEY PULLER

2670 Newport Road NE, Iowa City, IA 52240, 888-443-2288, Fax: 888-443-5088

## Leveler Parts - Low-Profile Puller

Part Number PUL-Leveler



| Ref. No. | Part Number | Description                                  | Quantity |
|----------|-------------|--|----------|
|          | PUL-Leveler | Leveler - complete                           |          |
| 1        | PUL-LV--02  | Feed screw                                   | 1        |
| 2        | PUL-LV-06   | Support block                                | 2        |
| 3        | 45-0860     | Flanged bushing, 3/8" ID x 1/2" OD x 1/2" LG | 2        |
| 4        | 45-4660     | Set collar                                   | 1        |
| 5        |             | Hexbolt, 3/8" - 16 x 1"                      | 4        |
|          |             | Lockwasher, 3/8"                             | 4        |
|          |             | Hex nut                                      | 4        |
| 6        | PUL-LV-16   | Spacer                                       | 8        |
| 7        | PUL-LV-12   | Side plate                                   | 2        |
| 8        | PUL-LV-10   | T- bar nut                                   | 1        |
| 9        | 45-0865     | Bushing, 3/8" ID x 1/2" OD x 1" LG           | 1        |
| 10       | PUL-20TH-07 | Pin, 1/8" Dia. x 7/8" LG                     | 1        |
| 11       | PUL-LV-04   | Hex adapter                                  | 1        |
| 12       | PUL-DB-10   | Detent ball, 3/8 - 16 UNC                    | 1        |
| 13       | PUL-LV-HNDL | Handle assembly                              | 1        |
| 14       | PUL-LV-08   | Shackle, 4-3/4 ton                           | 1        |
| 15       |             | Spacer                                       | 1        |
| 16       | PUL-LV-18   | Track Roller                                 | 1        |
| 17       |             | Socket head cap screw                        | 2        |
|          |             | Ny-lock hex nut                              | 2        |